



Devon IT TC10 Terminal Quick Start Guide

version 2.0

→ Unpack

Your Devon IT TC10 is typically shipped with the following items:

- Power supply and cord
- This Quick Start Guide document
- USB Mouse (optional)
- USB Keyboard (optional)
- DVI to VGA adapter (optional)



Inspect all parts visually for damage. If anything is damaged, please contact Devon IT immediately to report the issue.

IMPORTANT SETUP NOTICE:

The TC10 terminal is designed to operate in a vertical orientation. Failure to do so may cause damage to the unit. Ensure that your TC10 is standing on its base in an upright position, as illustrated in the picture above.

→ Setup

1. Connect the monitor to the DVI-1 port found on the back of the unit. A DVI to VGA adapter can be used for monitors only supporting VGA connections.
2. Plug the monitor's power cord into an AC outlet and turn it on.
3. If you are using dual monitors, repeat Steps 2 and 3, but connect the second monitor to DVI-2 port.
4. Connect a USB keyboard and mouse to any of the open USB ports on the unit. There are a total of 4 USB ports on the terminal (2 front; 2 rear)
5. Connect an Ethernet cable to the LAN port on the back of the unit and the other end of the cable to your local network.
6. Connect the power supply to the TC10's power supply jack located on the back of the unit.
7. Plug the power cord into a surge-protected AC outlet.
8. You may optionally connect the following additional devices to your TC10:
 - PC speaker: Rear speaker jack
 - Headphones/microphone: Headphone/Microphone jack*
 - USB peripherals: Auxiliary USB ports
9. Power on the TC10 by flipping the on/off switch located on the backside of the unit.
 - The top circular button on the front panel is for powering the remote blade on and off.
 - The button located just below that is used for disconnecting from the blade.

***Warning:** Excessive sound pressure from earphones and headphones can cause hearing loss. Adjustment of the volume to maximum increases the earphones and headphones output voltage and therefore the sound pressure level.



→ Establishing a PCoIP Connection

Once the TC10's boot process is finished, you will be presented with the Local User Interface Screen.

The network configuration of the terminal is set to DHCP by default. Located in the lower right-hand corner of the screen is a small computer network icon. An icon displaying a red **X** means the TC10 has not acquired an IP address and network connectivity is inactive. Conversely, an icon without the X mark indicates an IP address has been assigned and the unit is now connected to the LAN.

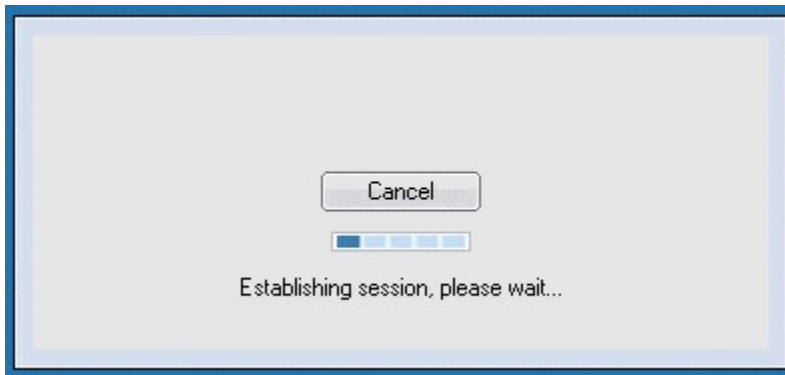


Network Connectivity is Active



Inactive Network Connection

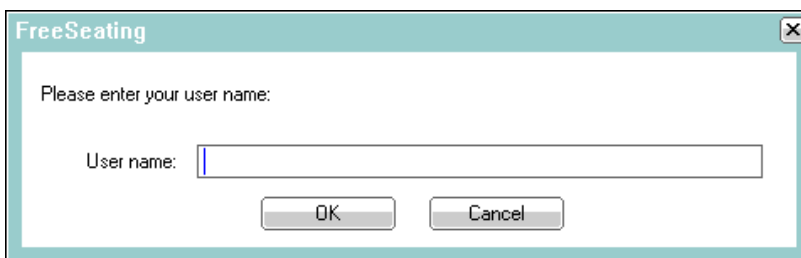
Using the mouse connected to your TC10, click the **Connect** button on the Local User Interface screen to initiate a connection to your DevonCM server. The screen displays the message, "Establishing session, please wait..." while this action is occurring.



Note: The default hostname of the Connection Broker to which the TC10 will connect is **WS-BROKER**. Please update your DNS and DHCP servers accordingly.

Free Seating and *Fixed Seating* are the two methods for pairing terminals (TC10 devices) with hosts (Blade Servers). The names of the terminals and hosts determine the pairing method. When a terminal requests a session, the connection broker looks for a host having the same name as that terminal. If the connection broker finds such a host, it will automatically pair the client with that host and your session will begin automatically. This type of pairing is called *Fixed Seating*.

Free Seating occurs when the connection broker is unable to find a host having the same name as the terminal. In this situation, you will be prompted to enter a user name. The connection broker will now connect the TC10 to a host with the name you provided.



Dialog prompt that displays for Free Seating Mode

You may now use the TC10 as you would a normal PC.



→ Network Settings and Troubleshooting Tools

If you are experiencing difficulties in acquiring an IP address, you may use the built-in Diagnostic tools that are available in the TC10's Local User Interface.

Diagnostic Tools:

- From the top, left-hand side of the Local User Interface Screen, select [Options](#) → [Diagnostics](#).
- The Diagnostics window has two tabs called [Event Log](#) and [Ping](#).
- The [Event Log](#) may offer clues as to why you may be having trouble obtaining a network address. Scroll towards the bottom of this log to view the most recent events

For example, you may see that an IP address could not be assigned due to a DHCP lease error. You can then refer back to your DHCP server to verify that a sufficient amount of IP addresses are available in your pool.
- The [Ping](#) tool, available on the second tab, is helpful in determining that your connection broker is indeed online and reachable from the network segment the TC10 resides on. On the Diagnostics window, select the second tab named [Ping](#), enter the IP address of the Connection Broker, and press the [Start](#) button. At this time, a few ICMP echo request packets will be sent to the selected address. An online Connection Broker will respond back to these ping requests and the [packets sent](#) and [packets received](#) fields will increment. An offline connection broker will not respond and therefore not increment the [packets sent](#) and [packets received](#) fields. Press the [Stop](#) button to terminate the Ping session.

Static Network Settings:

The network configuration of the TC10 is set to DHCP by default. However, you may prefer to configure your unit to use a static IP address instead.

- From the top, left-hand side of the Local User Interface Screen, select [Options](#) → [Configuration](#)
- To make network changes on this screen, you must first press the [Unlock](#) button on this window. The default password is **PASSWØRD** (Note: *PASSWØRD* is capitalized and the "Ø" is a zero). Press [OK](#) to continue.
- Unselect the [Enable DHCP](#) checkbox.
- You may now modify the value for the unit's static IP address.
- Make sure that you also update the subnet mask, gateway, and DNS IP addresses as well.
- Press [Apply](#) and [OK](#) buttons to continue.
- **Reboot** the TC10 for the changes to take affect.

→ Where to Go From Here

For complete administration information, please refer to the document titled, *DevonCM Administration Guide*.



Notice

Devon IT, Inc. reserves the right to revise and improve its products as it deems necessary. This document provides a description of the product at the time of printing, and may not necessarily be accurate for future or past releases. Please visit our website to download the latest version of this document: www.devonit.com

© 2008 Devon IT, Inc. All rights reserved.

All other company, brand, product, or trademark names are the property of their respective holders.

Devon IT, Inc.
1100 First Avenue
King of Prussia, PA 19406 U.S.A.
www.devonit.com



Summary of Device Specifications

Model Name	DITTC10
Terminal Dimensions	
Height	9.13" (232mm)
Width	3.70" (94mm)
Length	6.85" (174mm)
Weight	2.43 lbs (1100 grams)
Environmental	
Operating	0 to 35 degrees C 5 - 85% relative humidity
Non-Operating (Storage)	-40 to 60 degrees C 5 - 95% relative humidity
Air flow	Natural convection – top down with side vents
Power *	
Input Voltage Range	100Vac - 240Vac
Input Frequency	50Hz/60Hz
Power Adapter Type	Delta ADP-36CH BF
Power Supply	36 Watts

* **Notice:** Region/country specific power supply cords are required (not provided).