

Introduction

This document is for personnel conversant with Windows XP Technology and is written for installation and operation of NTA 8020C - Embedded Thin Clients.

The NTA 8020C - Embedded XP Appliance is the latest in the family of Windows desktop devices that utilizes Microsoft's Embedded XP operating system.

The NTA 8020C runs a full 32-bit Windows XP Embedded SP2 operating system. It has the entire OS embedded in a flash making it safe and reliable.

The NTA 8020C - Embedded XP Appliance is designed to provide what could effectively be called a 'tailor-made' desktop that has all the benefits of a thin client or Windows-based terminal, but with the advantages of Windows networking, Windows user authentication and more.

Please read the section on

- 1) [EWF Manager](#) to understand its operations, as this is one of the important embedded enabling features of Windows XP Embedded.
- 2) [Domain](#) or [Active Directory](#) participation.
- 3) [Tweakui](#) and [Auto login](#)

Software specifications

- Windows XP Embedded Service Pack 2
- Internet Explorer 6.0
 - i. Macromedia Flash Player
 - ii. Sun JRE (Java version 6)
- Citrix ICA Client version 10.0 (256-bit SSL)
- Microsoft Terminal Server Client – RDP 5.2
- Adobe Acrobat Reader 7.0
- Windows Media Player 10
- Microsoft Office Viewers (2003)
- Windows Firewall

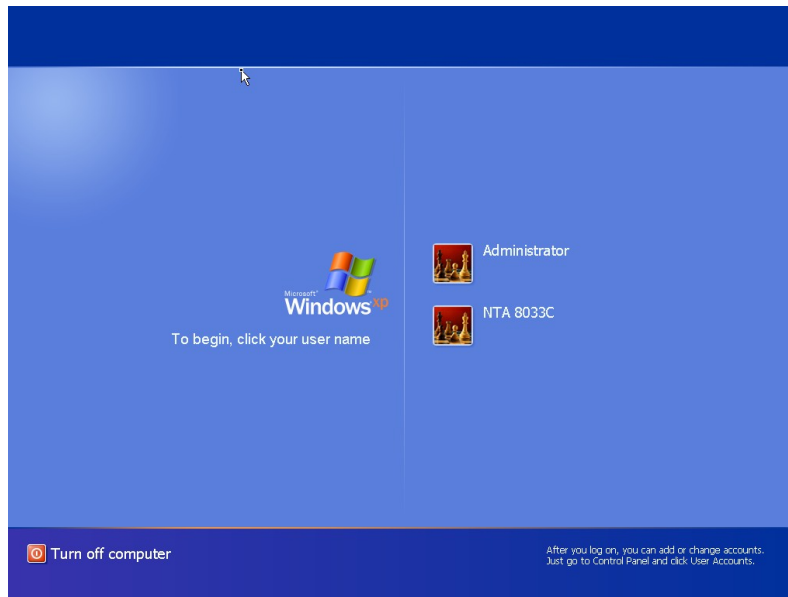
Optional Features Available

- Microsoft Framework 2.0 available upon request
- Devon IT Client for Leostream Connection Broker

In addition to the listed applications you can install any third party licensed software if there is adequate space on the flash. If the application installation requires a reboot commit changes to the system flash using the [EWF Manager](#).

Configuring the NTA 8020C for deployment

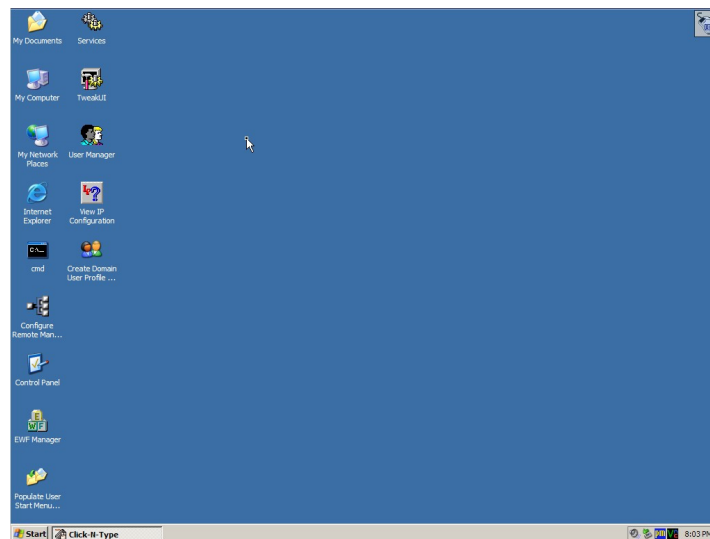
The NTA 8020C boots to display a Windows XP login screen.



The NTA 8020C has two local accounts.
"Administrator" – The default password is "Administrator"
"user" (alias NTA 8020C) – The default password is "User"

Administrator Login

Login as the local Administrator to make any system changes.



The Administrator Desktop has shortcuts to frequently used admin programs and utilities.

Some important utilities explained:

- [EWF Manager](#)
- [User Manager](#)
- [TweakUI](#)
- [Configure Remote Management Agent](#)
- [Populate User Start Menu | All Programs](#)
- [View IP Configuration](#)
- [Create Domain user profile from local user account](#)

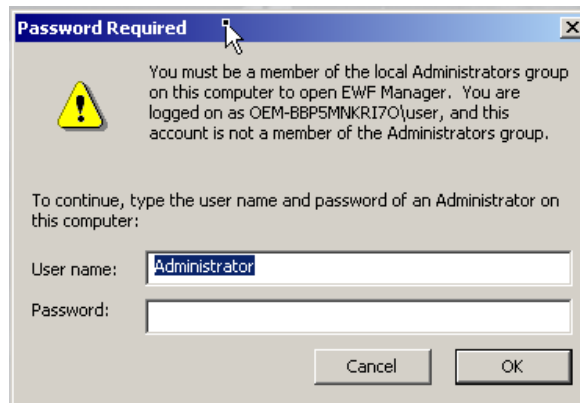
EWF Manager

The EWF as it is known operates by providing a “shadow writing” to the system RAM. When enabled, any writes to the storage media, such as setting changes etc are written automatically in shadow mode to the RAM overlay. This allows you to make settings and changes and then test and approve them prior to committing them to the system partition.

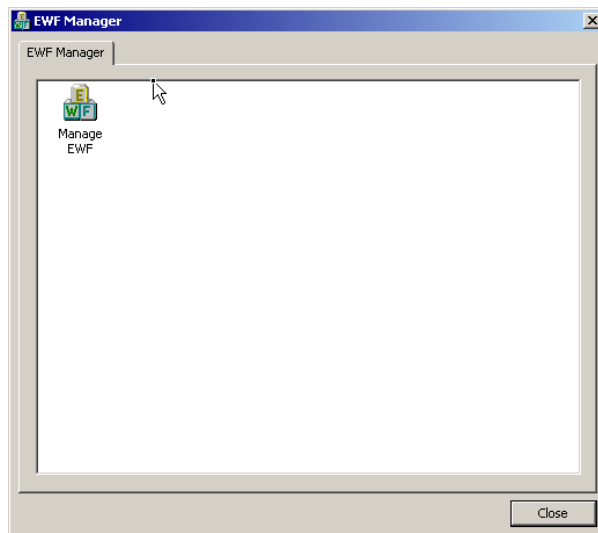
The NTA 8020C is shipped with EWF in the enabled state.

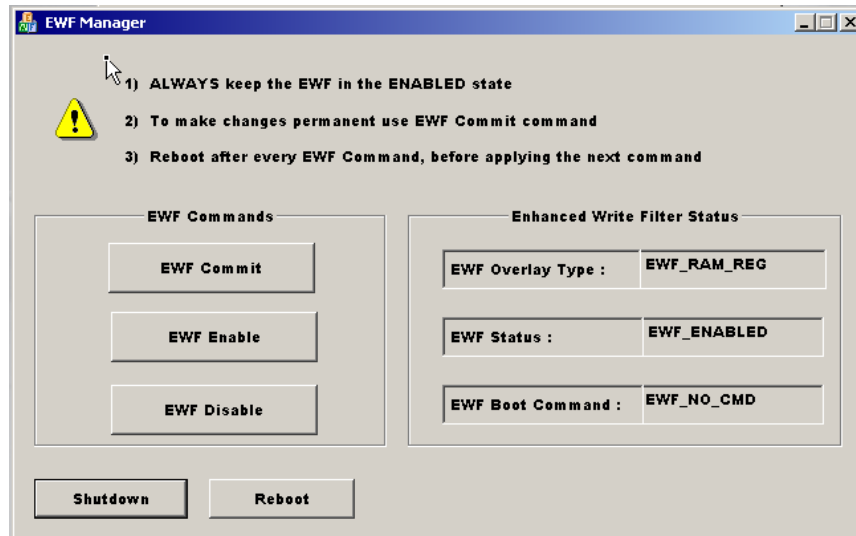
The EWF manager utility helps you to Disable, Enable or Commit changes to the EWF write filter.

Click on the EWF Manager icon on the desktop or from the Start Menu | All Programs | Administrative Tools. If the user is not a member of the local administrators group a prompt for Administrator credentials will popup as shown below. Login with an account which has local administrative privileges.



If the account is authenticated the EWF manager window will open. Click on Manage EWF.





“EWF Status” shows the current status of the EWF.

To save any setup configurations or changes to the system you have to commit changes using the “EWF commit” button in the EWF Manager. Reboot the device for the command to take effect.

To disable the EWF protection you should use the “EWF Disable”.

When you are convinced that you have the right configurations you can enable EWF protection by clicking the “EWF Enable” button.

Note:

Reboot after every EWF Command for the command to take effect.

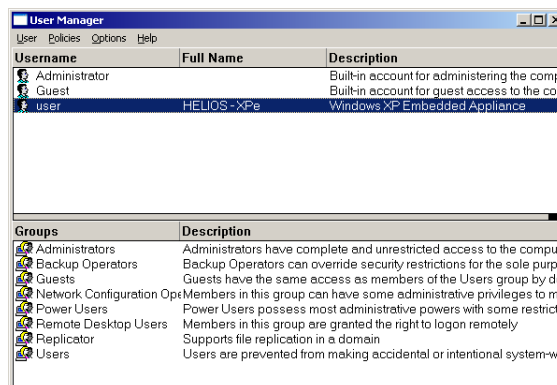
THE EWF Manager is accessible from the User account from Start Menu | All Programs | Administrative Tools.

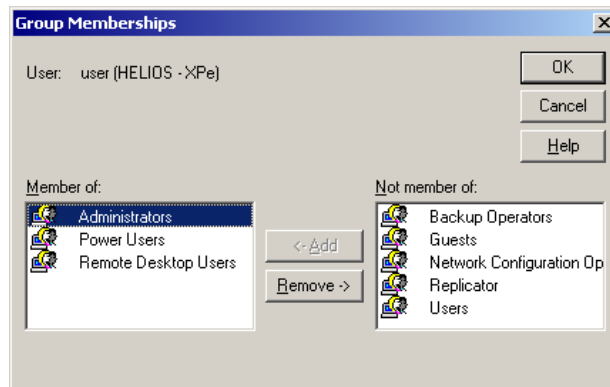
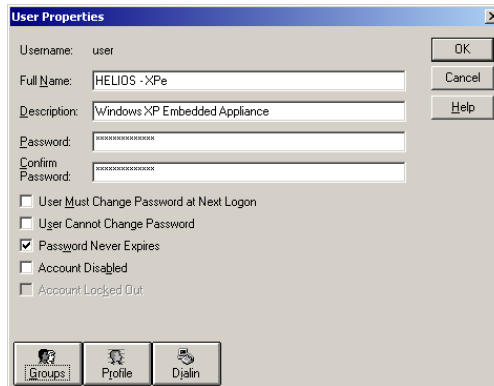
User Manager

The NTA 8020C has two local accounts.
 “Administrator” – Default password is “Administrator”
 “NTA 8020C” – Default password is “User”

The NTA 8020C can be configured to Auto logon to the user account. Auto logon can be enabled or settings changed using TweakUI which is found in the Administrative Tools and also on the Administrator Desktop.
 Use this to change passwords to local accounts or add/remove administrative privileges from the “user” account.

By default the “user” account is a member of administrators group. Once the NTA 8020C is configured on the network, remove the “user” account from the administrators group.



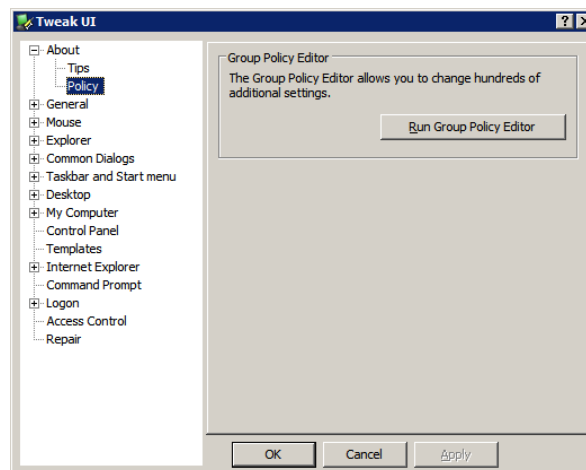


Note: Do not add new users.

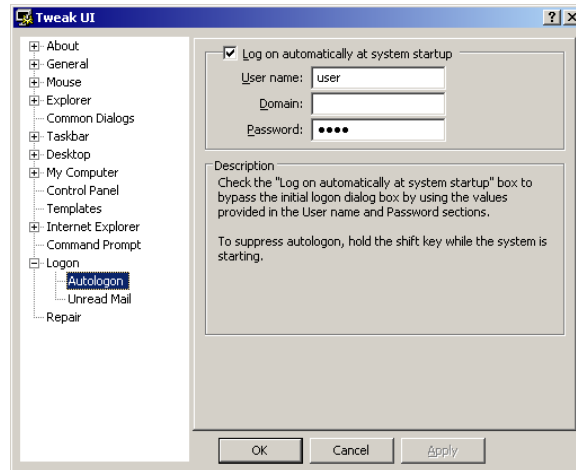
TweakUI

Use this utility to control the “Auto Logon” feature. You can setup the NTA 8020C to auto logon into the user account. If the user password is changed, use the TweakUI utility to set the new auto logon password.

The TweakUI also has access to the Group Policy Editor.

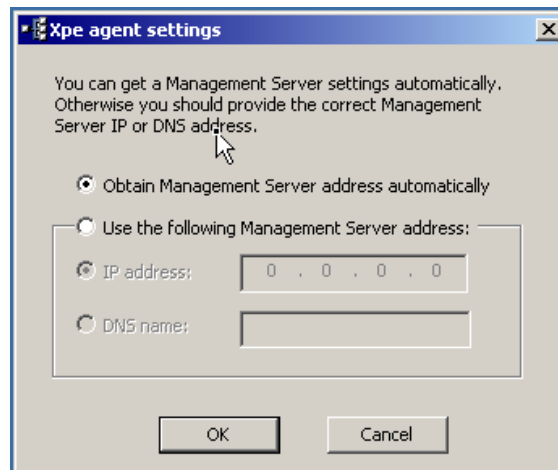


Commit changes to EWF using the EWF manager for the change to be persistent.



Configure Remote Management Agent

Use this utility to specify the Remote Management Server. By default the agent is set to obtain the Management server IP automatically.

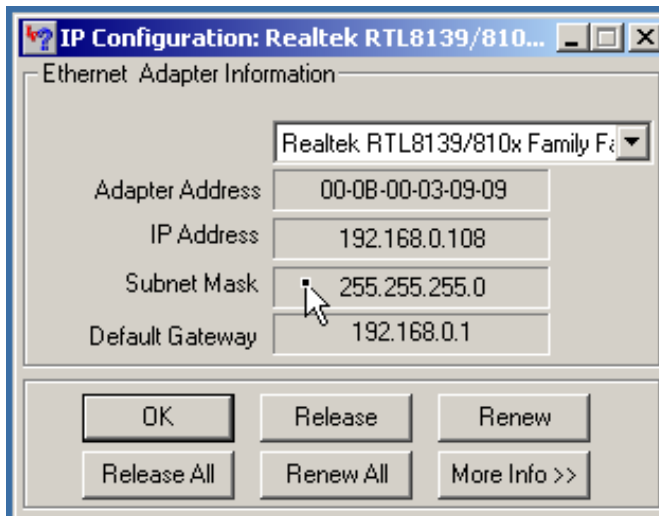


Populate User Start Menu | All Programs

This is an Executable batch file that copies the default program shortcuts to the User | Start Menu | All Programs directory.

View IP Configuration

Gives IP information of the NTA 8020C



Create Domain user profile from local user account

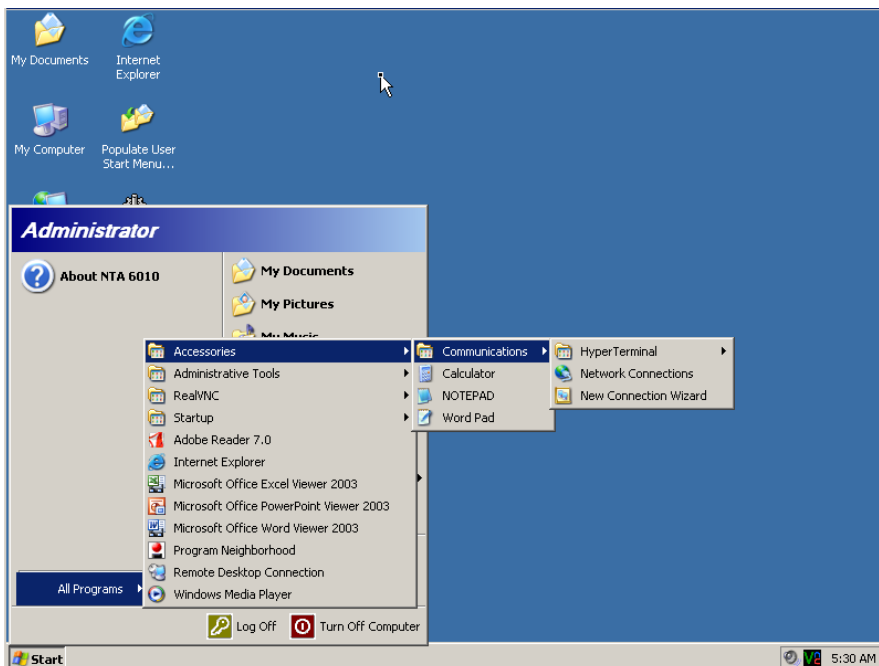
Execute this utility from the local Administrator account to create a Domain user profile from the local user account.

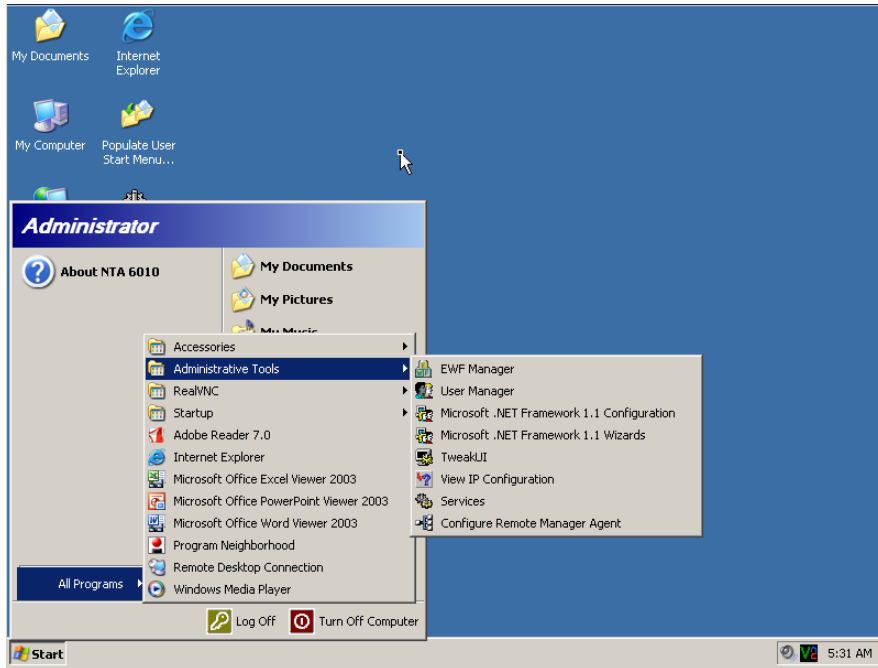
Note: Before executing this script start from a fresh boot and login as the local user. Configure the local user account with Internet Explorer settings, Desktop and start Menu shortcuts etc. Log out and login as Administrator.

Also See: [Domain or Active Directory Participation](#)

Administrator Start Menu

The Administrator Start Menu has access to all installed applications and utilities.





Domain or Active Directory Participation

Use the user (NTA 8020C) account as a template for domain or active directory user profiles.

1. Log on to the local "user" (NTA 8020C) account and setup Internet Explorer (Default Home page and other settings), ICA or RDP or any available applications.
2. Create Desktop shortcuts to required applications.
3. To Auto Start an application copy the application shortcuts to the Startup folder which is on the Start Menu | All Programs.
4. Logout of the user account and log in as Administrator.
5. Click on "[Create Domain user profile from local user account](#)" icon
6. Go to Control Panel | System | Computer Name and Click on "Change" button and change Computer Name or join a domain or workgroup. **(Do not reboot the terminal at this point when it prompts you)**
7. Commit changes using "EWF Commit" button in the EWF Manager. When the device reboots you will get a classic Windows log on screen. Use your domain credentials to log on.

Ensure that EWF is in the enabled state before logging on using domain credentials. If you do not, the profiles created locally can fill up the system flash.

Remote Control (Terminal Services)

The NTA 8020C can be remotely controlled by using a standard RDP client. Only local accounts can be used to login remotely using RDP. Only one session, whether local or remote is allowed on the NTA 8020C. When a remote RDP session is launched to the NTA 8020C the current session on the device is disconnected if the remote session uses different logon credentials. If the remote session uses the same credentials as the current user on the device then the session is transferred to the remote users desktop.

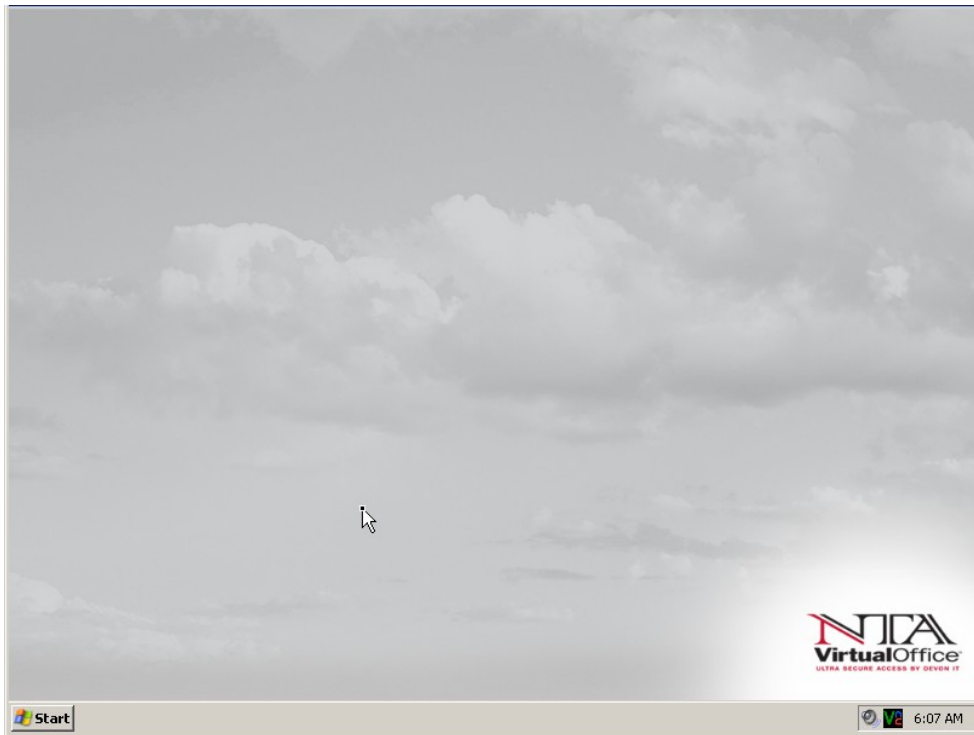
Remote Shadowing (VNC)

The NTA 8020C can be remotely shadowed by using a standard Internet browser which has a JVM plug-in. No password is set to allow remote VNC connections. The devices can also be shadowed using a VNC Viewer.

NTA 8020C (user) Login

The user account should be used for deployment to end users.

Click on the NTA 8020C icon on the Log On screen. By default there is no password set for the user account.



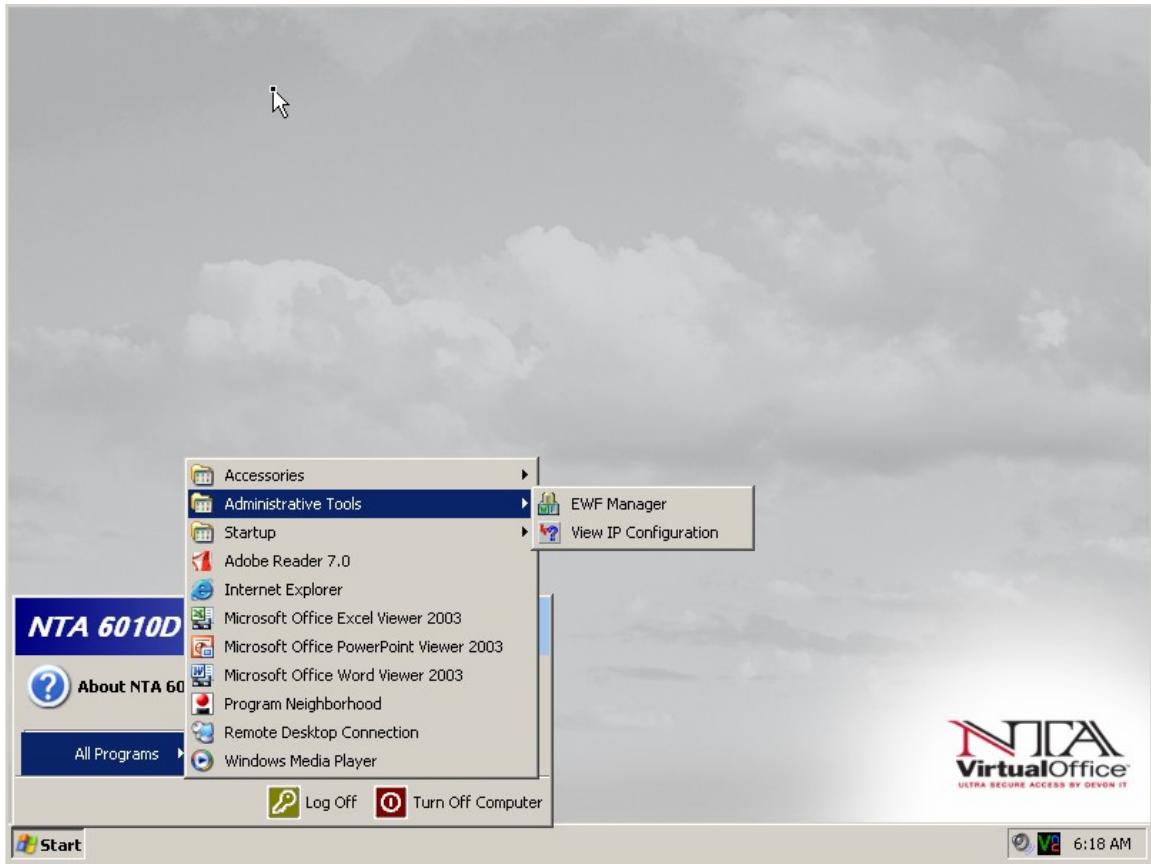
By default you should see a blank Desktop.

The Start Menu | All Programs has shortcuts to all available applications on the NTA 8020C. Use the application you wish to configure and create connections shortcuts on the Desktop. If you want the connections to auto start on boot, copy them to the Start Menu | Start Up folder which is all available on the All Programs Menu.

If you are convinced about the configuration you can commit the changes to the system by using the EWF Manager. The EWF manager is available from the Start Menu | All Programs | Administrative Tools.

You can delete any shortcuts from the Start Menu if do not want the user access to some applications.

Use "Populate User Start Menu | All Programs "executable on the Administrator Desktop to repopulate the default Start Menu shortcuts.



Note: By default the NTA 8020C (user) account is a member of administrators group. It is advised to remove administrator privileges from the user account after configuration.

For help with Citrix ICA and other installed applications please refer to the Help Files available within the applications.

Support

For technical support please provide the model and version number, displayed in the help file. This information is available on the Administrator and user Start Menu.

