

NTA Thin Client Terminal 8020/8030 Quick Start Guide

→Unpack

Your NTAVO thin client terminal is typically shipped with the following items:

1. Power cable
2. A mouse (optional)
3. A keyboard (optional)

Inspect all parts visually for damage. If anything is damaged, please contact Devon IT immediately to report the issue.

→Setup

1. Connect a monitor to the VGA port found on the back of the unit.
2. Connect a PS/2 mouse and keyboard to their respective ports on the back of the unit.
3. Connect an Ethernet cable (RJ45) to the Ethernet port on the back of the unit and connect the other end of the cable to your network (switch/hub/router).
4. Plug in the power cord.

→System Start

Press the Power Button to turn on the terminal. The power button is located near the very top, front side of the terminal. The NTA 8020/8030 boots to display a Windows XP login screen.

There are two local accounts:

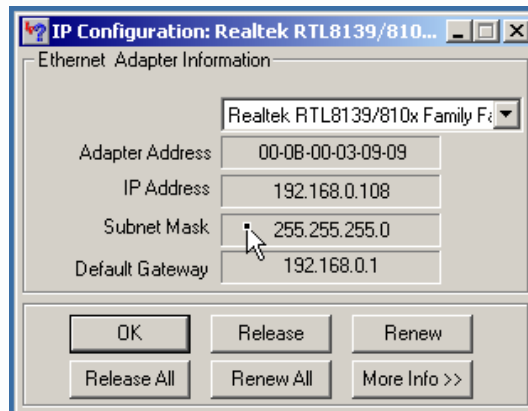
- “Administrator” – The default password is “Administrator”
- “User” (alias NTA 8020C) – The default password is “User”

Login as the local Administrator to make any system changes. The Administrator Desktop has shortcuts to frequently used admin programs and utilities.

NTA Thin Client Terminal 8020/8030 Quick Start Guide (cont.)

→Network Settings

On the Administrator Desktop, you will find an icon called, “View IP Configuration”. Click this to view current IP settings.



→EWF Manager

The EWF as it is known operates by providing a “shadow writing” to the system RAM. When enabled, any writes to the storage media, such as setting changes etc are written automatically in shadow mode to the RAM overlay. This allows you to make settings and changes and then test and approve them prior to committing them to the system partition.

The SafeBook is shipped with EWF in the enabled state.

The EWF manager utility helps you to Disable, Enable or Commit changes to the EWF write filter.

Click on the EWF Manager icon on the desktop or from the Start Menu | All Programs | Administrative Tools. If the user is not a member of the local administrators group a prompt for Administrator credentials will popup as shown below. Login with an account which has local administrative privileges.

If the account is authenticated the EWF manager window will open. Click on Manage EWF.

“EWF Status” shows the current status of the EWF.

To save any setup configurations or changes to the system you have to commit changes using the “EWF commit” button in the EWF Manager. Reboot the device for the command to take effect.

To disable the EWF protection you should use the “EWF Disable”.

When you are convinced that you have the right configurations you can enable EWF protection by clicking the “EWF Enable” button.

Note:

Reboot after every EWF Command for the command to take effect.

THE EWF Manager is accessible from the User account from Start Menu | All Programs | Administrative Tools

→Where To Go From Here

Please visit the XPe Resource section of our website to download User Manuals, XPe Remote Manager Software, Snap-Ins, and other useful items relating to our XPe-based terminals.

URL : http://www.devonit.com/resources/8020C_xpe_resource.php

When contacting our technical support department, please provide the model and version number, displayed in the help file. This information is available on the Administrator and user Start Menu.

