

Aurora for Windows Embedded Installation Guide

Table of contents

Contents

<i>Table of contents</i>	2
<i>Introduction</i>	3
1.1 - Features	3
<i>Installation</i>	4
2.1 System Requirements	4
2.1.1 System software requirements:	4
2.1.2 System hardware requirements:	4
2.1.3 Third-party software requirements:	4
2.1.3 FTP server requirements:	4
2.2 Installation	5
2.2.1 To install:	5
2.2.2 Installing License packs:	11
2.2.3 Uninstalling:	12

Introduction

Aurora for windows embedded is an embedded thin client device management software based on open Internet standards. Through a management console, it enables the administrator to remotely monitor, update, control and configure an inventory of Windows XP Embedded thin client devices.

This guide illustrates how to install, configure the Aurora for windows embedded software.

1.1 - Features

- Centralized management of XPe devices.
- Stores device and other settings in a centralized SQL 2000/2005 database or MSDE.
- Centrally apply system hotfixes, application snap-in's, application updates, firmware reloads to single or multiple XPe devices.
- Clone settings from a configured XPe device and apply to single or multiple target XPe devices.
- Join remote XPe devices to the Active Directory.
- Remotely change local Administrator and User account passwords.
- Remote control or shadow XPe devices.
- Wake up, restart or shutdown remote XPe devices.
- Organize XPe devices on LAN/WAN environments into logical groups.
- Automatically group devices specified by subnet range.
- Manage XPe devices in a WAN environment and devices which are behind a NAT firewall.
- Schedule tasks that need to be executed on the XPe devices.
- User-friendly graphical user interface.
- Easy licensing module which allows to add-on install license packs as and when new devices are installed on the network.

Installation

This chapter covers installation and requirements for Aurora for windows embedded.

2.1 System Requirements

Before installing the Aurora for windows embedded software make sure that all system requirements have been met and that all required software has been properly installed and configured.

2.1.1 System software requirements:

The Aurora Management Console and server can be installed on any of the following Windows operating systems.

- Windows XP Professional SP2
- Windows 2003 Server

2.1.2 System hardware requirements:

- PC x86 workstation or server configuration recommended for running the above Operating **systems**.
- **Minimum 500 MB** of HDD space. Recommended 1 GB HDD space in root drive.

2.1.3 Third-party software requirements:

The installation program will determine if the following third party software required to run is already installed. If the required third-party software is not installed, the installation program will install them.

- Microsoft .NET Framework 2.0 (included with the installation package).
- Microsoft SQL 2005 Express edition (included with the installation package).
- Microsoft Remote boot Server (optional). (included with the installation package).

Note: For enterprise wide XPe device management, a High Availability MS SQL Server 2000/2005 an be specified during installation.

2.1.3 FTP server requirements:

Apart from simple tasks such as changing XPe device name, shutdown, restart or wakeup devices, an FTP server is required for all other tasks. The following FTP servers are validated with the Aurora XPe management software.

- Microsoft Internet Information Server (IIS) on Windows XP professional PC Windows 2003 server and Windows XP Professional
- Filezilla Windows FTP server

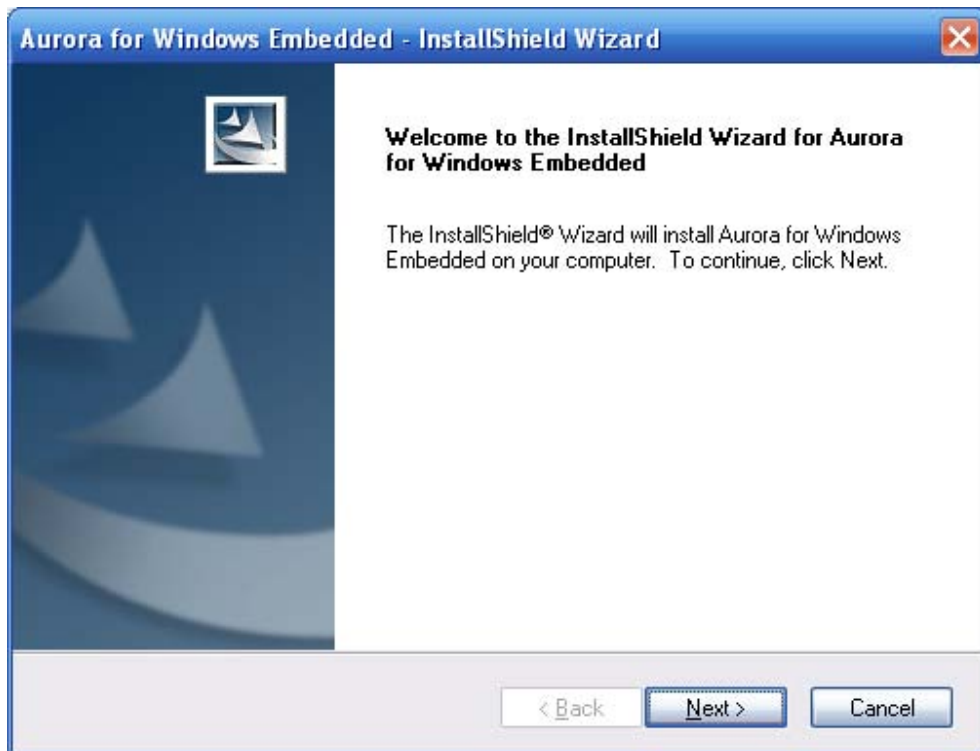
In addition to the above any Standards Based FTP Server could be used

2.2 Installation

Note: Ensure any previous versions of have been uninstalled, and the computer has been rebooted, before attempting to re install. Windows administrator privileges are required to install the application.

2.2.1 To install:

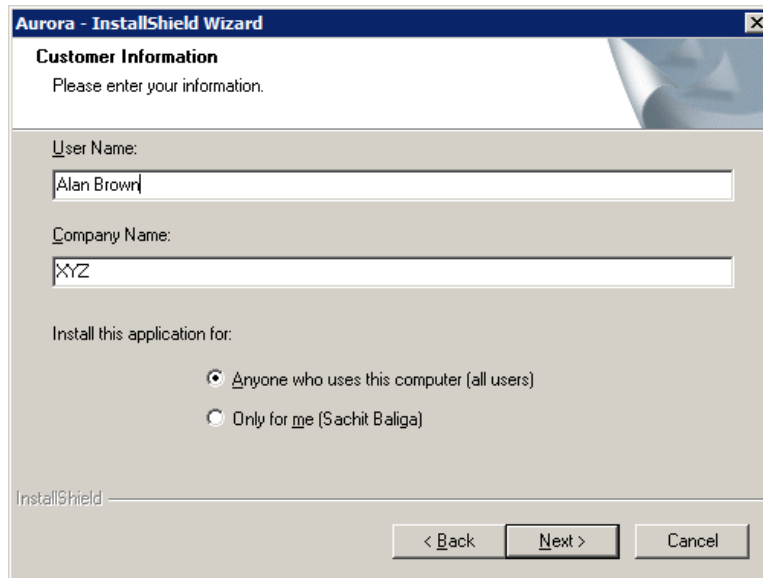
1. Download and execute the Aurora For Windows Embedded - Build 72.exe self extracting executable to extract the installer to the Desktop or any convenient location.
2. Open the extracted folder and execute setup.exe



3. Click next. The setup will install Microsoft .net Framework 2.0 if it is not already installed. This may take a while and ensure that it is successfully installed before proceeding with the next steps of the Aurora installation.
4. Click next and enter the installation key provided in the input box. Please note that the product will be licensed for 5 users and additional license packs should be installed to manage more than 5 devices. Contact your sales or support representative to obtain license packs.



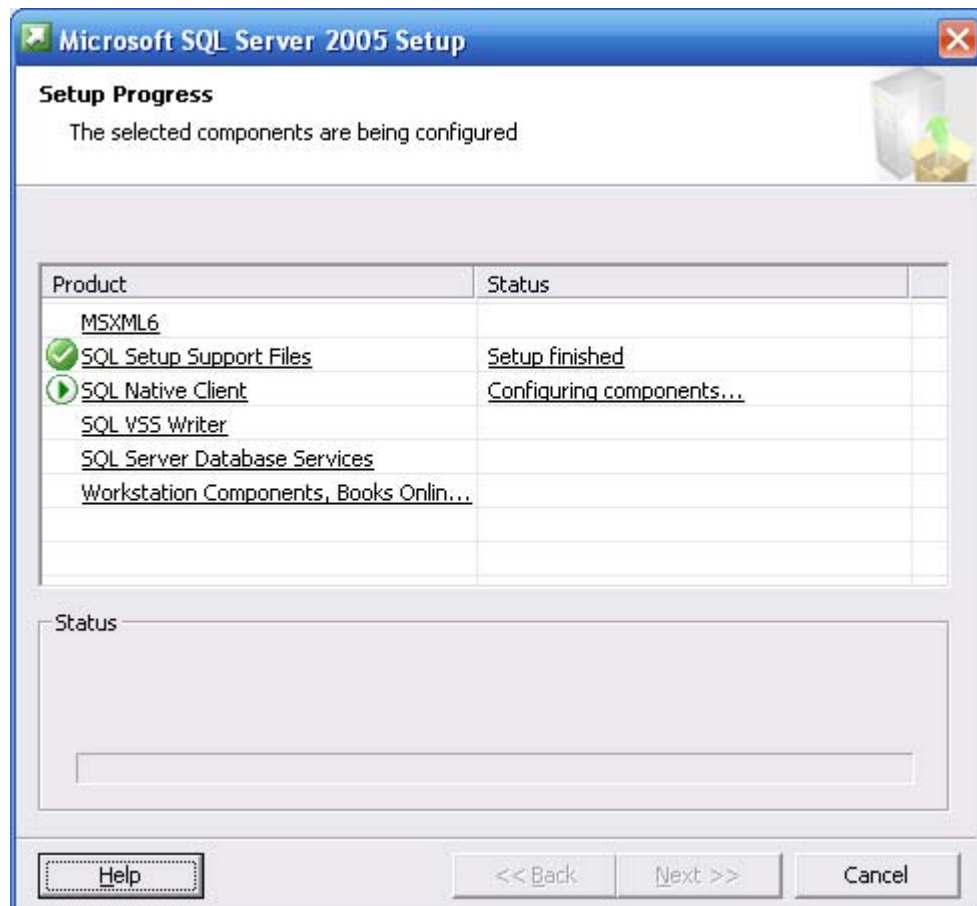
5. Enter the Program users name and Company name. You can also choose to install the application for the current user only.



6. The following screen allows you to install MS SQL Express edition if the setup program does not detect previously installed MSDE 2000A. Check the "Install SQL Express 2005" option and enter and confirm a password. If a previous installation of SQL was detected, this screen will be grayed out. Click next to continue.



7. If you chose to install SQL 2005 express, the setup will install SQL and the following screen will be presented.



- 8.

9. On successful SQL 2005 express installation click next to create a database. Enter the database server name, administrator name and password and a database name. You could also specify a previously created Aurora database.

Aurora for Windows Embedded - InstallShield Wizard

Application database setup

Please specify the computer name and other parameters of the SQL Server where you want to create the database.

Database server name
BALIGAS

Database server administrator
sa

Database server administrator password
||||

Database name
AURORA

Create new database Use existing database

InstallShield

< Back Next > Cancel

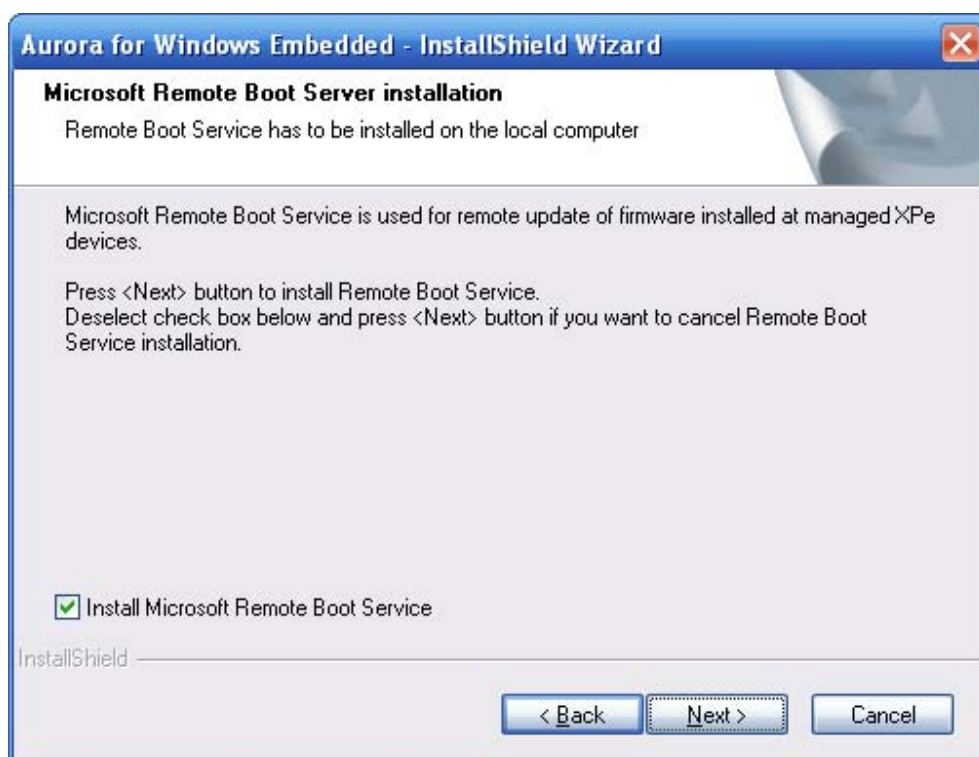
10. The following error message will be displayed if any of the specified database parameters are incorrect.



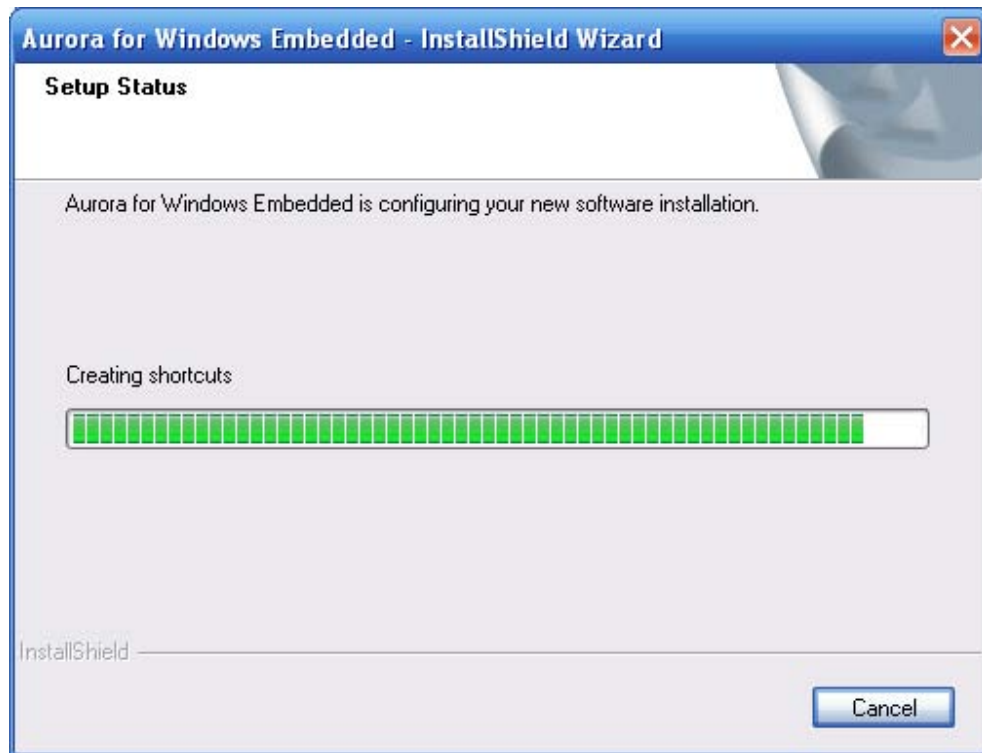
11. If the database connectivity is successful, the installation proceeds to the FTP connection details screen. If you know the ftp server details you can enter it here or check "skip" to configure this later after completing the Aurora installation. Please note the ftp directory specified should be a directory under the ftproot directory.



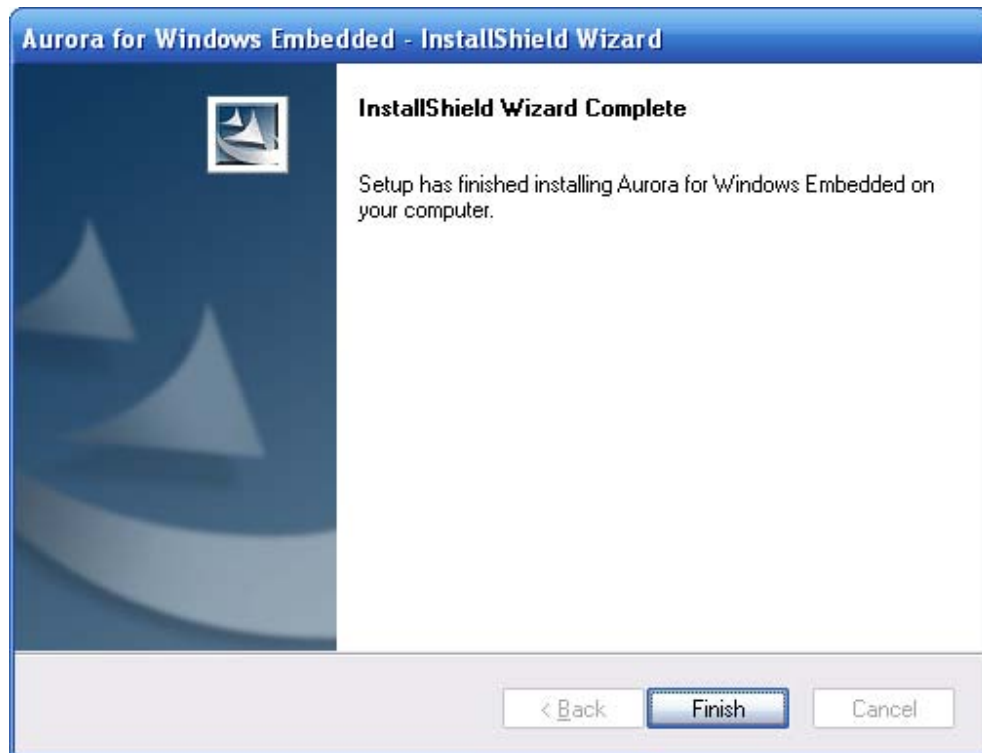
12. Click next to continue. The Microsoft remote boot server (RBS) will be installed. RBS is required to backup or restore a complete XPe file system and uses a built-in PXE server.



13. After RBS installation, the setup will continue to install Aurora for windows embedded and complete the installation.



14. Click finish.



2.2.2 Installing License packs:

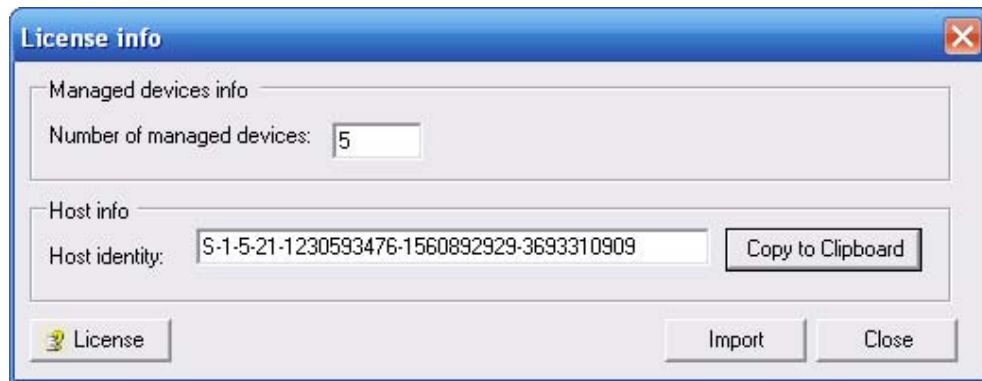
The default installation can manage up to 5 XPe devices.

To install additional license pack for the installation product invoke the Aurora Management console from the Desktop shortcut or Start Menu → Programs → Aurora for Windows embedded → Aurora Management Console.

1. Click on the Help Menu → License...



2. Copy the Host identity by clicking the “Copy to Clipboard” button.

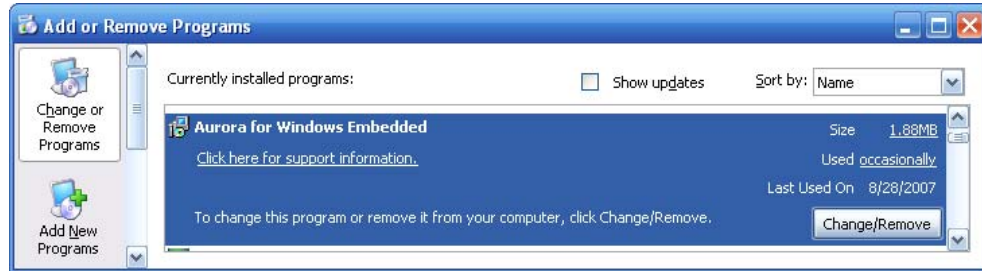


3. Email the Host identity to your sales or support contact.
4. Your sales/support contact will send you the link to a download a zipped license.xml file.
5. Extract the zipped license file to the Desktop or any convenient location.
6. Import the license.xml file by clicking on the “Import” button in the Help | License menu. This license file will install the authorized number of licenses on this host.

Note: Do not open the license.xml file to keep its integrity. If you have any real time virus scanner disable it temporarily until you download, extract and import the license file.

2.2.3 Uninstalling:

Aurora for Windows embedded can be uninstalled through the Microsoft Windows Control Panel → Add/Remove Programs. Select Aurora and click Change/Remove. The program will be uninstalled.



Note: The un-installation program does not remove

- Remote boot Server
- .Net Framework 2.0
- SQL 2005 Express

These components have to be removed using their own uninstaller programs.

